

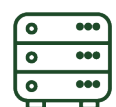
EPOS FACTS



26 Countries involved in the integration plan



20 Countries in EPOS ERIC



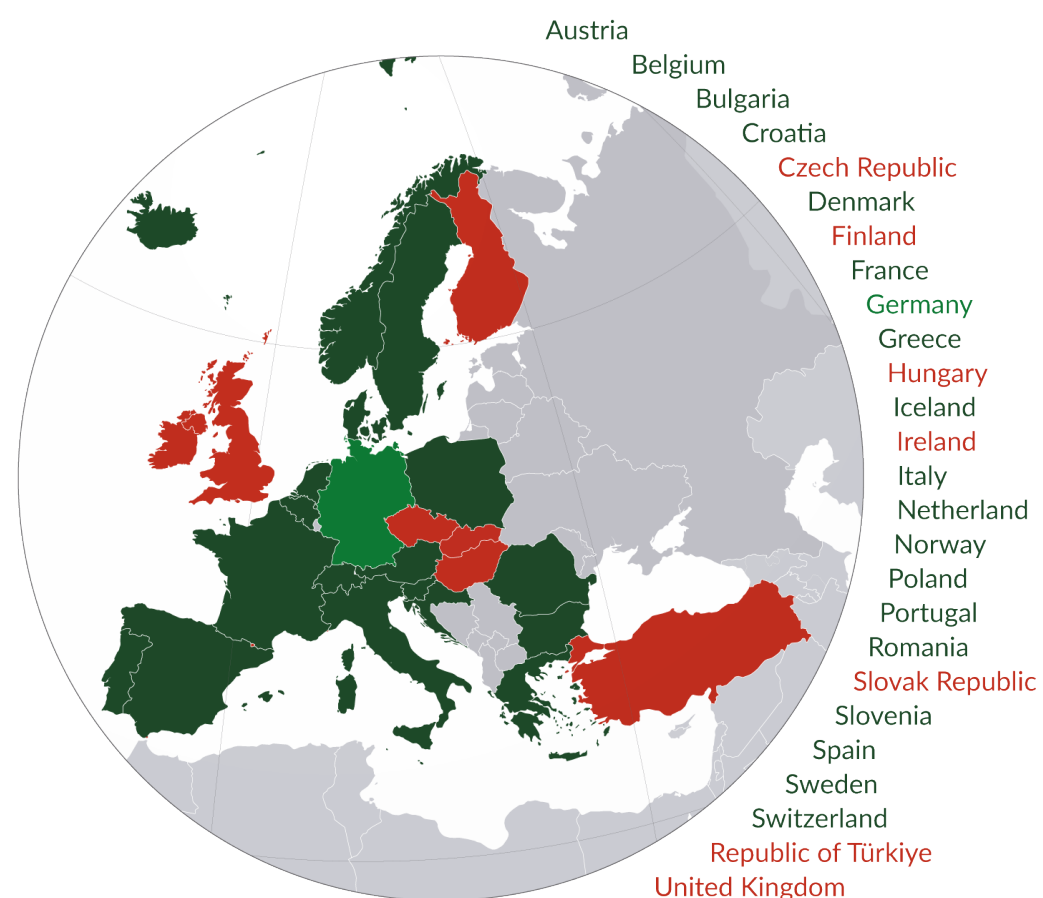
494 Data and Service Providers



285 Integrated data and services

EPOS is FAIR

- **Open access** to data and high-level services from research infrastructures for cross-disciplinary research
- **Services for data access** e.g. technologies needed to provide access to data, including AAAI technologies and web services
- **FAIR metadata** e.g. creation or reuse of metadata standards and vocabularies for describing datasets, services and other resources
- **FAIR data** e.g. harmonization of data made available under clear usage conditions licenses



EPOS
 the pan-European
 distributed research
 infrastructure for
SOLID EARTH SCIENCE
 enabling
EXCELLENT SCIENCE
 to understand
 planet Earth dynamics
 for a safe and
 sustainable society



www.epos-eu.org



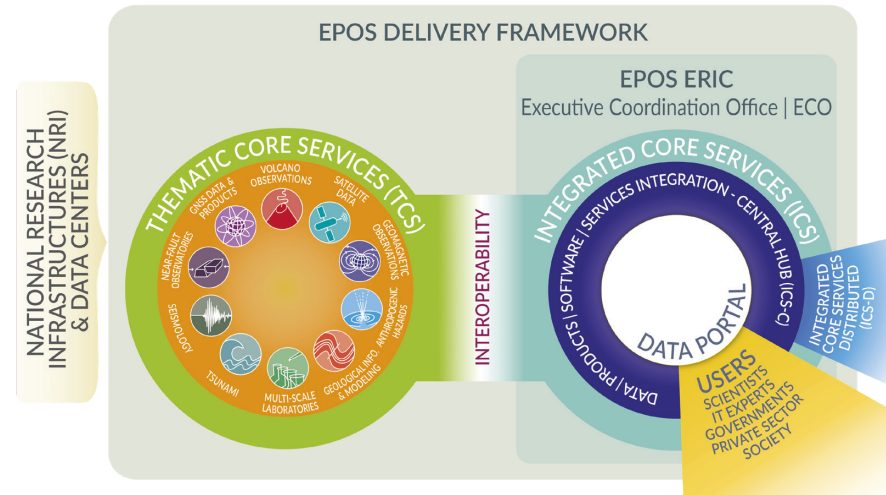
www.epos-eu.org

www.epos-eu.org



How EPOS works

EPOS, the **European Plate Observing System**, is the **only research infrastructure for solid Earth science in Europe**. EPOS promotes **open science** and it is committed to enable excellent science and innovation. Born in 2007 with the aim of developing a long-term plan for sharing and harmonizing scientific data and products, it integrates about 150 national research organizations into a single distributed infrastructure.



EPOS community is currently organized in **10 Thematic Core Services**, covering a great variety of solid Earth science disciplines.

Integration of the existing national and trans-national Research Infrastructures.

Interoperability of thematic services for a multidisciplinary community of users.

Progress in **science** and improvement in geo-hazard assessment, risk mitigation and sustainable management of geo-resources.

Sustainability through strategic investments in research infrastructures at national and international level.

The EPOS Data Portal

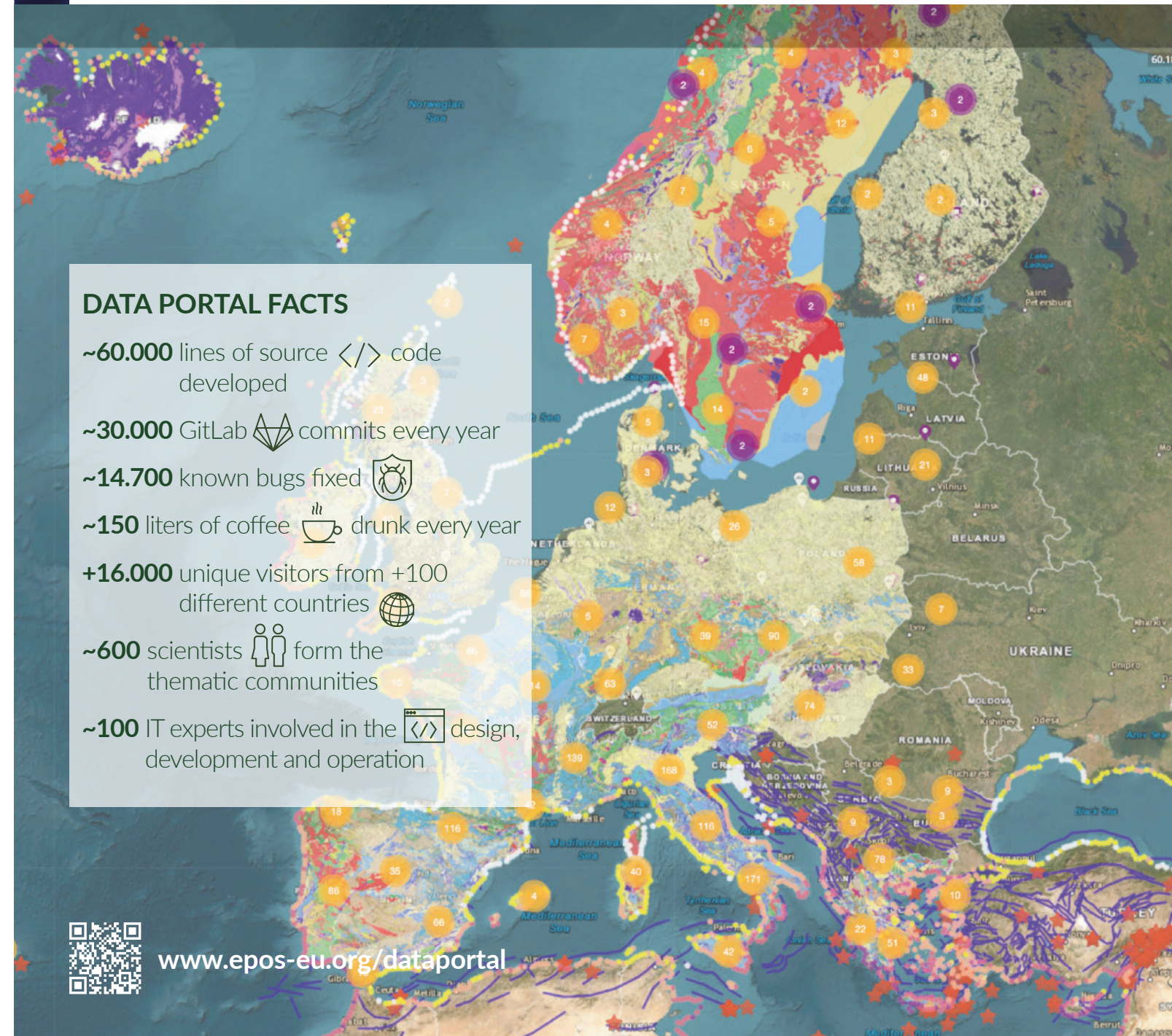
The **Data Portal** is the **platform** that provides an **unprecedented** amount of **high-quality** and harmonized scientific **data, products** and **services** for users (e.g., researchers, IT experts, institutions, decision-makers), to **foster** state-of-the-art **research** and **innovation** for a **safe** and **sustainable society**.

DATA PORTAL FACTS

- ~60.000 lines of source `</>` code developed
- ~30.000 GitLab  commits every year
- ~14.700 known bugs fixed 
- ~150 liters of coffee  drunk every year
- +16.000 unique visitors from +100 different countries 
- ~600 scientists  form the thematic communities
- ~100 IT experts involved in the  design, development and operation



www.epos-eu.org/dataportal



EPOS
the **DISTRIBUTED**
RESEARCH INFRASTRUCTURE
for **SOLID EARTH SCIENCE**
to understand
the dynamics
of planet Earth
for a safe and
sustainable society

DATA PLATFORM FACTS

~60.000 lines of source  code developed

~30.000 GitLab  commits every year

~14.700 known bugs fixed


~150 liters of coffee drunk every year

+16.000 unique visitors from +100 different countries

~600 scientists  form the thematic communities


~100 IT experts involved in the  design, development and operation

DATA PLATFORM FACTS

~60.000 lines of source  code developed

~30.000 GitLab  commits every year

~14.700 known  bugs fixed

~150 liters of coffee  drunk every year

+20.000 unique visitors  from +120 different countries

~600 scientists  form the thematic communities

~100 IT experts involved in the  design, development and operation