

EPOS ON - Project Summary

- ▶ Project Start: **1st September 2024**
- 📅 Project Duration: **36 Months**
- € EC Grant n°: **101131592**
- ★ Coordinator: **EPOS ERIC**
- 👥 Project consortium: **include 34 partners from 18 countries, including private companies.**

Key Goals

- Enhances the EPOS service portfolio.
- Expands institutional & scientific collaborations.
- Supports new Thematic Core Services & broader data access.
- Engages users, particularly early-career researchers, at European & global levels.
- Develops new processing & workflow services to bridge science & the private sector.

Impact

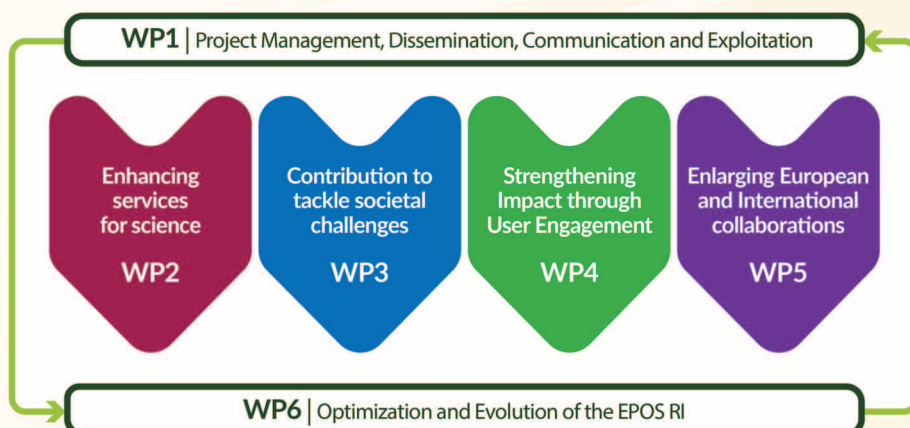
- Fosters knowledge transfer & technological innovation.
- Reduces fragmentation in the European Research Area.
- Strengthens EPOS's ability to unite scientific communities & countries.

Strategic Objectives

- 1 Ensure full exploitation of project results** through a Consortium representative of the EPOS community.
- 2 Cultivate multidisciplinary research** as the next step needed to boost EPOS impact.
- 3 Enhance & disseminate the EPOS societal value** to increase its capacity to trigger socio-economic impact.
- 4 Elaborate a User Strategy** able to capture user needs & to evaluate their implementation.
- 5 Reinforce the presence of EPOS in the European & global contexts**, through cooperation & networking with relevant organizations & initiatives.
- 6 Strengthen the EPOS long-term sustainability** by focusing on actual needs to steer EPOS optimization & evolution.

EPOS ON - Concept Design

The Work Package structure consists of two transversal Work Packages (WP1, WP6) & four vertical Work Packages (WP2-WP5), all of which contribute to WP6.



Work Package Summaries

WP1: Project Management, Dissemination, Exploitation, and Communication

Manages project operations (contractual, financial, strategic), governance, and risk management. Focuses on result dissemination and exploitation while aligning with WP6 to maximize EPOS ERIC's use of outcomes.

WP2: Enhancing Services for Science

Expands EPOS services, integrating new countries, communities, and private sector data. Develops TCS, IT functionalities, and ICS-D prototypes to support scientific advancement.

WP3: Tackling Societal Challenges

Supports hazard risk management, develops ethical guidelines with service labels, and explores ways to reduce environmental impact.

WP4: Strengthening User Engagement

Refines the User Strategy, enhances communication, and implements training for early-career researchers. Promotes multidisciplinary use and builds the EPOS community.

WP5: Expanding Collaborations

Strengthens global partnerships (Africa, Latin America, US, Japan) and connects with the European Open Science Cloud, broadening EPOS's reach.

WP6: Optimizing and Evolving EPOS RI

Synthesizes WP outputs for EPOS optimization, updates the Sustainability Plan, and engages new countries. Develops an IT tool for integrated EPOS service management.

Project Partners

EPOS ERIC (project coordinator) | 
 University of Utrecht | 
 CNRS | 
 Royal Observatory of Belgium | 
 University of Bergen | 
 Institute of Geophysics-Polish Academy of Science | 
 Aristotle University of Thessaloniki | 
 Lulea University of Technology | 
 Norwegian Geotechnical Institute | 
 AGH University of Krakow | 
 GFZ -Helmholtz Centre Potsdam | 
 Research Centre of the Slovenian Academy of Sciences & Arts-ZRC SAZU | 
 ISPRA | 
 National Institute for Research & Development for Earth Physics | 
 EUCENTRE | 
 Federal Institute for Geology, Geophysics, Climatology & Meteorology | 

CNR | 
 University of Oulu | 
 Geothermal Research Cluster (GEORG) | 
 Ruđer Bošković Institute | 
 Global Earthquake Model foundation | 
 Association of the Instituto Superior Técnico for Research & Development | 
 Icelandic Meteorological Office | 
 "Federico II" University of Naples | 
 University Beira Interior | 
 Boğaziçi University | 
 National Observatory of Athens | 
 French Geological Survey - BRGM | 
 INGV | 
 Université Grenoble Alpes | 
 Université Clermont Auvergne | 
 Landsvirkjun | 
 Flanders Marine Institute (VLIZ) | 
 ETH Zurich | 

OPTIMIZATION AND EVOLUTION